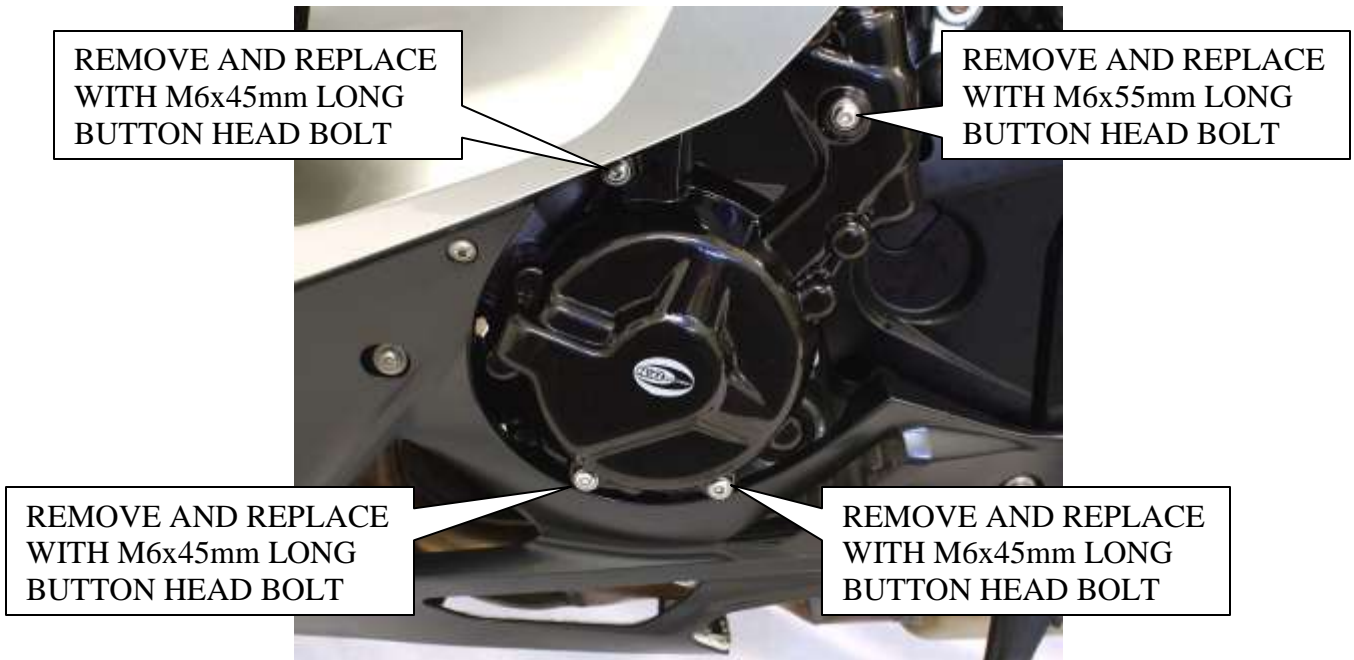




**FITTING INSTRUCTIONS FOR ECC0043 LHS ENGINE CASE COVER  
BMW S1000RR 2010**



In this kit there should be  
1 x Engine Case Cover (ECC0043)  
1 x M6x55mm long button head bolt  
3 x M6x45mm long button head bolts  
4 x M6 Washers

**PLEASE READ THESE INSTRUCTIONS FULLY BEFORE STARTING**

- Please make sure the engine is cold before proceeding with the fitting of the R&G cover.
- Remove the four engine case bolts arrowed above. Hold the cover loosely over the case to help identify the correct ones. **DO NOT REMOVE ALL OF THE CASE BOLTS.**
- Remove the two fairing bolts closest to the cover to allow fairing and coolant hose to be gently eased away from engine to aid in fitment of parts.
- Continued overleaf...



- Offer up the R&G cover to the engine (while gently easing fairing and coolant hose away from casing) and carefully fit it over the engine casing. Ensure that the bolt holes are lined up with the holes in the engine casing, and then push on as far as it will go.
- Fit the bolts as labelled in first picture.
- With a 4mm Allen key tighten the bolts with washers equally so that they pull the cover into place. **DO NOT FULLY TIGHTEN.**
- Finally use a torque wrench set at 3 Nm plus 90degree turn to fully tighten.
- Refit and tighten fairing bolts.
- It is suggested that you check the tightness of the mounting bolts on a regular basis i.e. when cleaning or once a month.
- NOTE for the cleaning of this product you should only use a mild general detergent.
- R&G will accept no liability if the above procedure and torque settings are not followed.

#### **CONSUMER NOTICE**

The catalogue description and any exhibition of samples are only broad indications of the Products and R&G may make design changes which do not diminish their performance or visual appeal and supplying them in such state shall conform to the order. The Buyer acknowledges no representation or warranty (other than as to title) has been given or will apply to the Products other than those in R&G's order or confirmation and the Buyer confirms it has chosen the Products as being of merchantable quality and suitable for its particular purposes. Where R&G fits the Products or undertakes other services it shall exercise reasonable skill and care and rectify any fault free of charge unless the workmanship has been disturbed. The Buyer is responsible for ensuring that the warranty on the motorcycle is not affected by the fitting of the Products. On return of any defective Products R&G shall at its option either supply a replacement or refund the purchase money but shall not be liable if the Products have been modified or used or maintained otherwise than in accordance with R&G's or manufacturer's instructions and good engineering practice or if the defect arises from accident or neglect. Other than identified above and subject to R&G not limiting its liability for causing death and personal injury, it shall not be liable for indirect or consequential loss and otherwise its liability shall be limited to the amounts paid by the Buyer for the Products or the fitting or service concerned. These terms do not affect the Buyer's statutory rights.

#### **R&G RACING RETURNS POLICY (NON-FAULTY GOODS)**

Returns must be pre-authorized (if not pre-authorized the return will be rejected). Goods may only be returned direct to us if they were purchased direct from us (customer must prove if necessary). Otherwise to be returned to original vendor. Goods must be in re-sellable condition, in the opinion of R&G Racing. All returns are subject to a 25% restocking and handling fee (25% of the gross value exc. P&P – at the prevailing price at time of purchase). The customer must pay any and all carriage charges. No returns of discontinued products, unless within 14 days of purchase. This policy does not affect your statutory rights and does not refer to faulty goods.



**FRANCE**  
**INSTRUCTIONS DE MONTAGE POUR LA PROTECTION**  
**ECC0043 BMW S1000RR 2010**

Ce kit contient:

- 1 x Protection moteur
- 3 x Vis M6x45 mm
- 1 x Vis M6x55 mm
- 4 x M6 Rondelles

**MERCI DE LIRE LA NOTICE AVANT DE COMMENCER LE MONTAGE**

- Veiller à ce que le moteur de la moto soit froid
- Enlever les 4 vis de fixation du carter moteur (voir photo ci-dessus). Ne pas retirer toutes les vis de fixations de carter.
- Enlever les deux vis de carénage (proches du carter), ceci afin de pouvoir monter la protection plus facilement sur le moteur (en poussant légèrement la durite de refroidissement).
- Visser légèrement les 4 vis dans le carter moteur [la vis la plus longue en position plus haute] (attention à ne pas mettre les vis de travers, nous vous conseillons de les visser à la main dans un premier temps).
- A l'aide d'une clé Allen de 4 mm, visser les vis avec rondelles, ne pas bloquer les vis pour le moment.
- A l'aide d'une clé dynamométrique, serrer les 4 vis, (couple de serrage 3 Nm) + 1 quart de tour
- Remonter les vis de carénage et bloquer le carénage.
- Note importante:
  - vérifier le serrage des vis au moins une fois par mois.
  - Le nettoyage de la protection doit se faire à l'aide d'un produit nettoyant non agressif et à l'aide d'un chiffon doux.
- Aucune garantie ne sera acceptée par R&G en cas de mauvais couple de serrage et en cas d'utilisation de nettoyeurs trop agressifs.